

MONTHLY MEMBERSHIP PROGRESS REPORT

District 4 C6

Results as of: 9/30/2024

GMT:

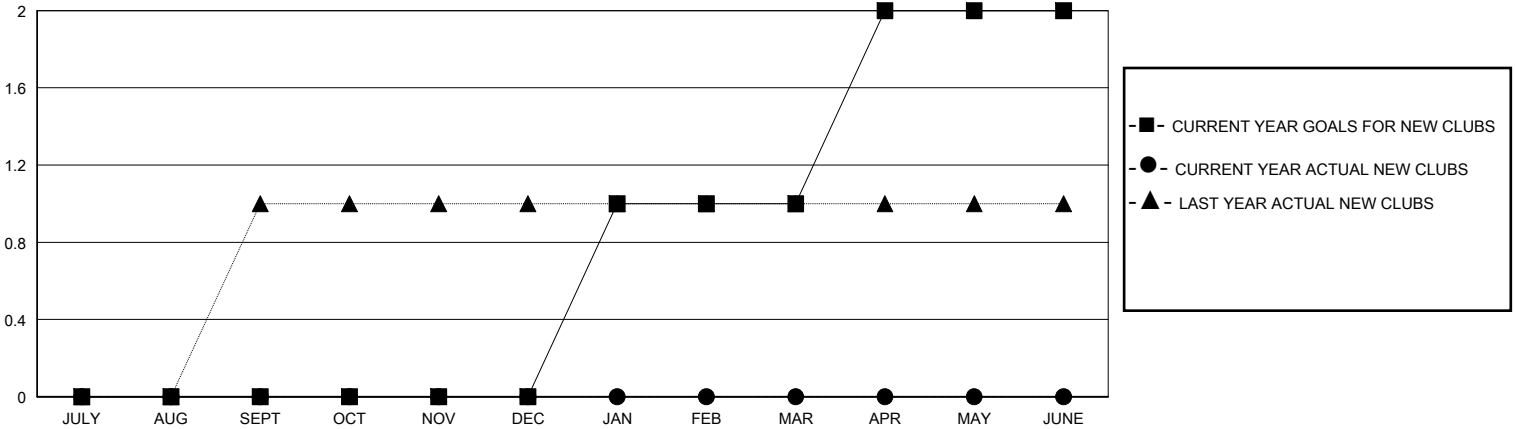
LOCATION CALIFORNIA

GMT CA

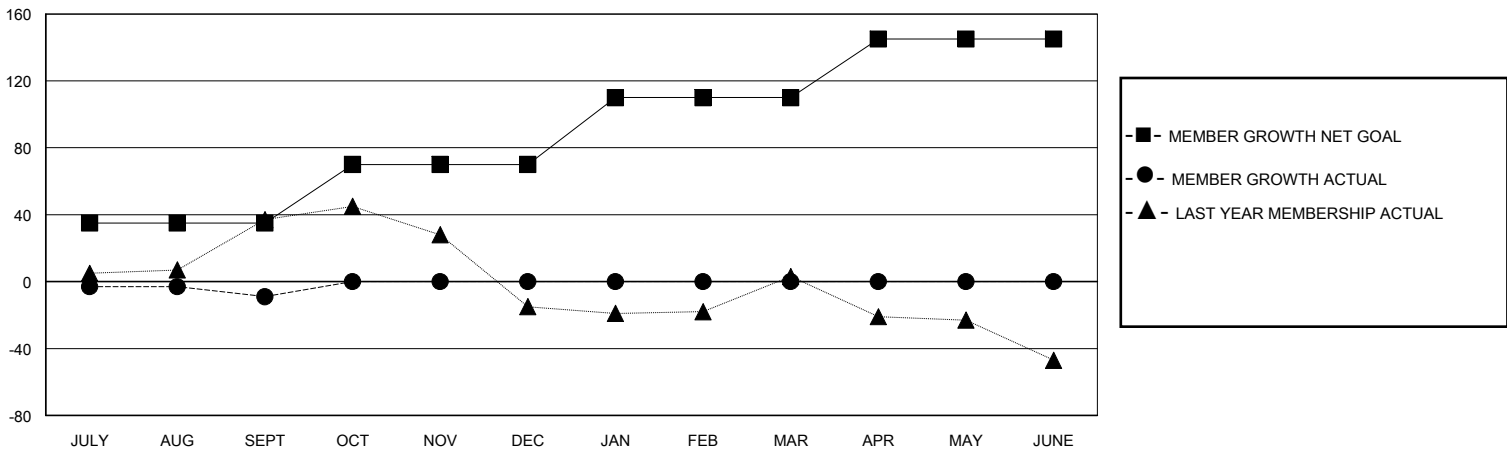
Clubs			
RESULTS FOR 2024-2025			
QUARTER	NEW CLUB GOAL	NEW CLUBS	DROPPED CLUBS
JULY/AUG/SEPT	0	0	0
OCT/NOV/DEC	0	0	0
JAN/FEB/MAR	1	0	0
APR/MAY/JUNE	1	0	0

Members			
RESULTS FOR 2024-2025			
QUARTER	MEMBER GROWTH NET GOAL	MEMBER GROWTH ACTUAL	DROPPED MEMBERS ACTUAL (including transfers)
JULY/AUG/SEPT	35	29	33
OCT/NOV/DEC	35	0	0
JAN/FEB/MAR	40	0	0
APR/MAY/JUNE	35	0	0

GOALS AND ACTUAL NEW CLUBS CUMULATIVE



GOALS AND ACTUAL MEMBERS CUMULATIVE



DROPPED CLUBS: 0	11 CLUBS OF 38 ADDED 1 OR MORE NEW MEMBERS	GENDER DISTRIBUTION
		MALE 499 (52.31%)
		FEMALE 454 (47.59%)
DROPPED MEMBERS	CLICK HERE FOR CUMULATIVE MEMBERSHIP DATA	TOTAL FAMILY UNIT MEMBERS 0
DECEASED 8		FAMILY MEMBERS PAYING HALF DUES 0
CLUB CANCELLED 0		
OTHER 24		
TOTAL 32		